



Working in Partnership

The final mile: Connecting an impact-based warning service to decision making

Paul Davies, Met Office Chief Meteorologist

Typhoon Haiyan



PHILIPPINE AIR FORCE VIA REUTERS



WMO Fact Finding Mission : summary and conclusions

Going the extra mile – can science deliver??

“I would rather die with my refrigerator than let it
be taken by a storm surge”

2014

STAKEHOLDER MEETING, MANILA



Severe Weather Warnings Colour Codes

	NO SEVERE WEATHER EXPECTED Keep up to date with latest forecast
	BE AWARE Remain alert and keep up to date with latest forecast
	BE PREPARED Remain vigilant, keep up to date with latest forecast and take precautions where possible
	TAKE ACTION Remain extra vigilant, keep up to date with latest forecast. Follow orders and any advice given by authorities and be prepared for extraordinary measures



Advice on impacts

Flood Risk Matrix				
(River, tidal, coastal, surface water and groundwater flooding)				
Likelihood	High			
	Medium			✓
	Low			
	Very Low			
	Minimal	Minor	Significant	Severe
Potential impacts				

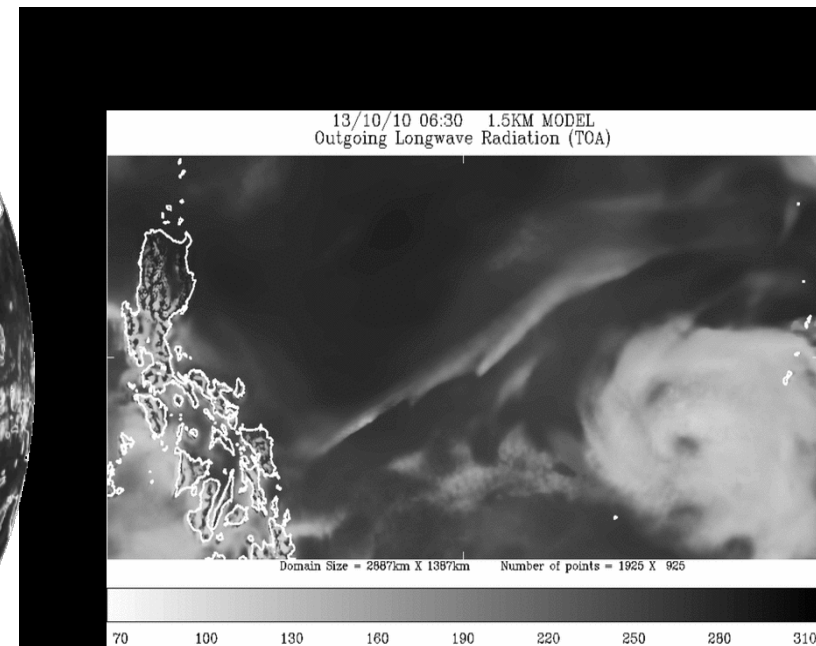
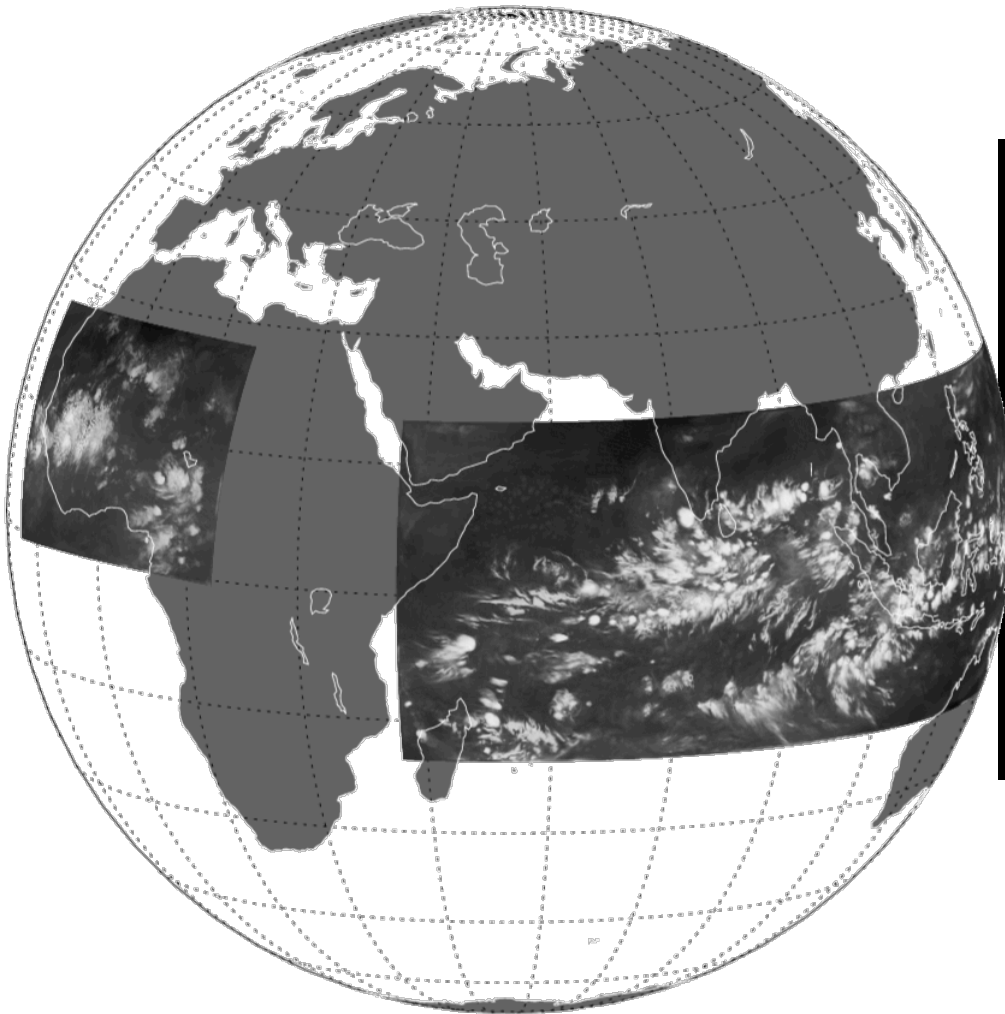


“...bridging the Valley of Death...through effective translation and application of science”



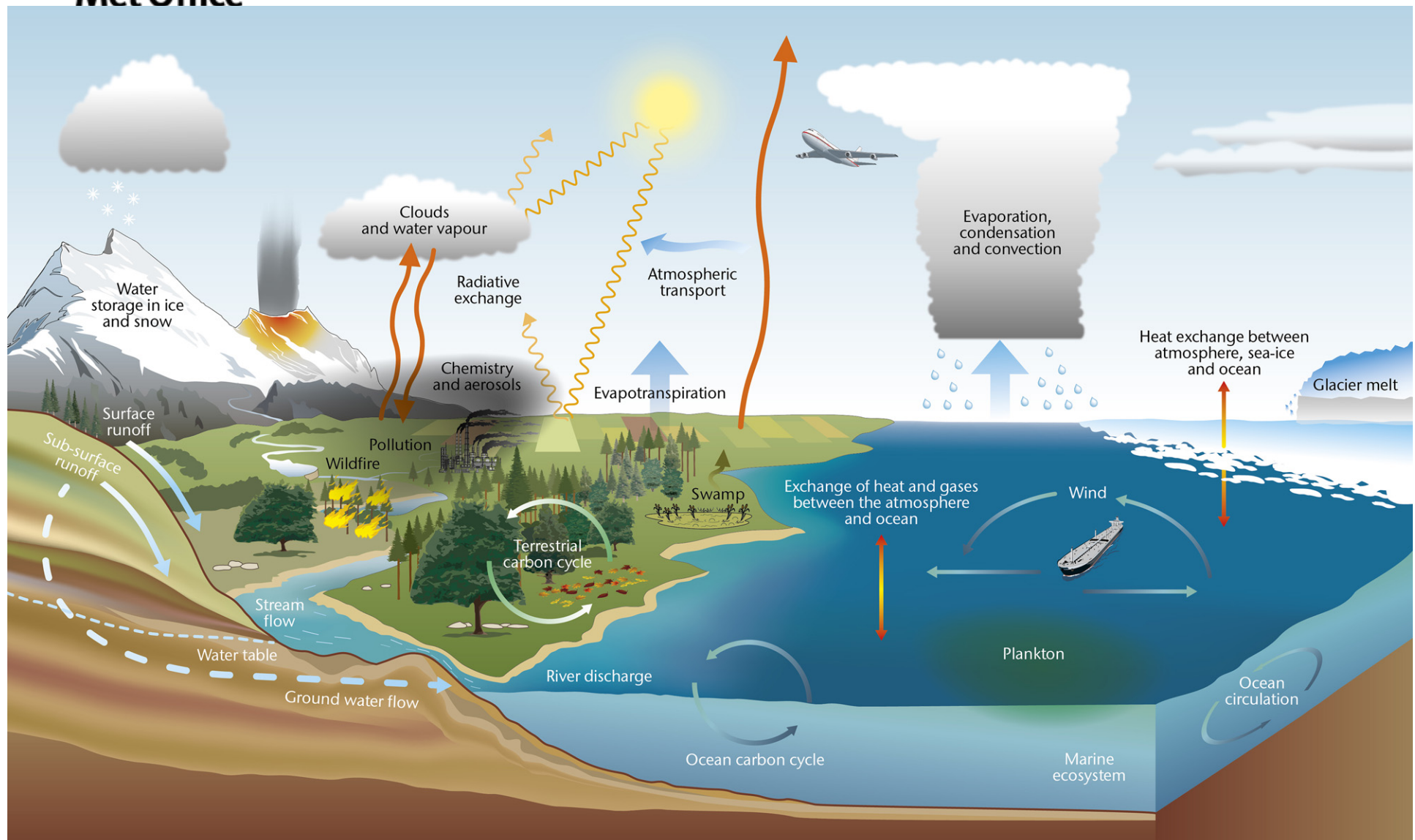
Big Data, Big Science

Each day the Met Office processes and stores **106 million observations**, completes **20 quadrillion (10^{15}) calculations**, archives **10 Tera (10^{12}) bytes of model data** and produces **4 million forecasts** per day



Environmental Prediction

Modelling the 'Earth System' ...



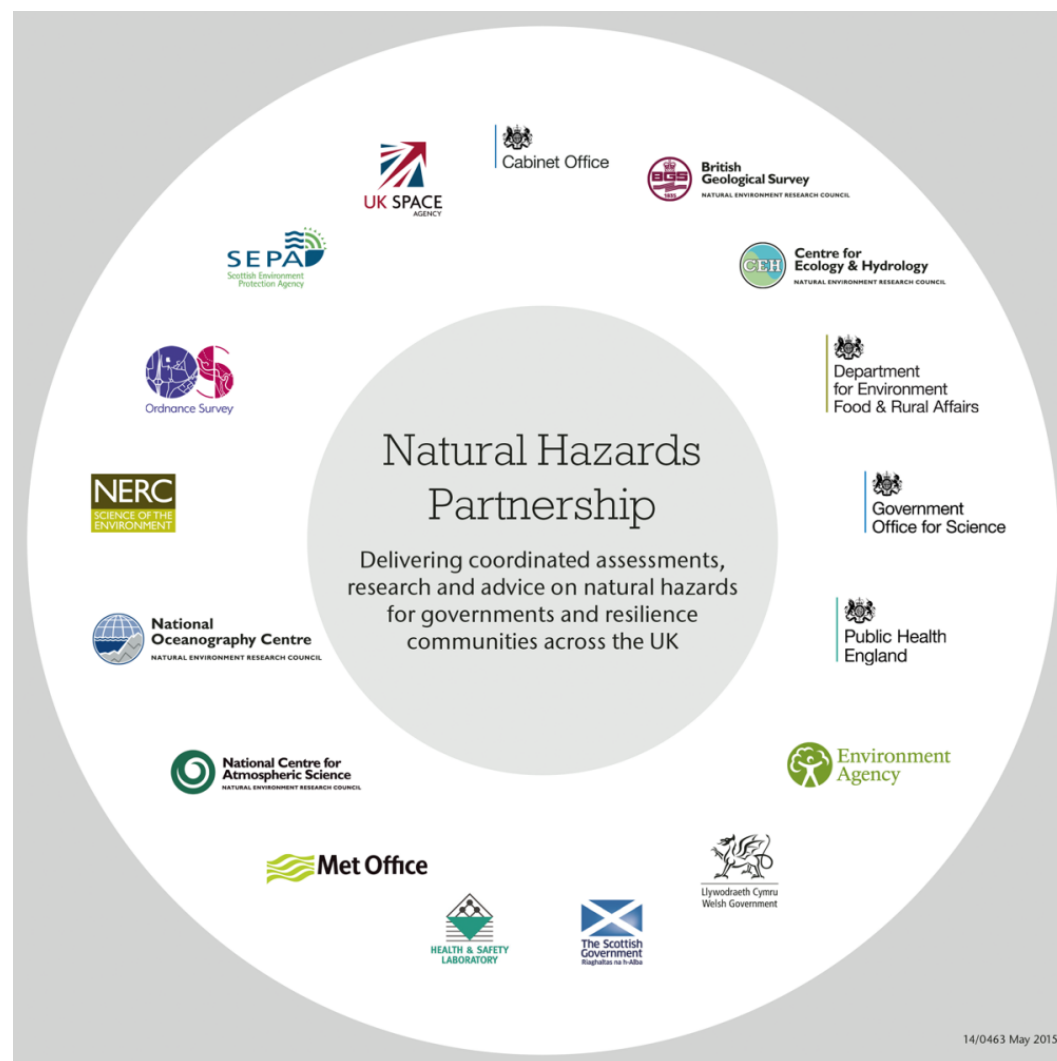
Recognising the challenges

Increasing our vulnerability and exposure





Working in Partnership





Met Office

