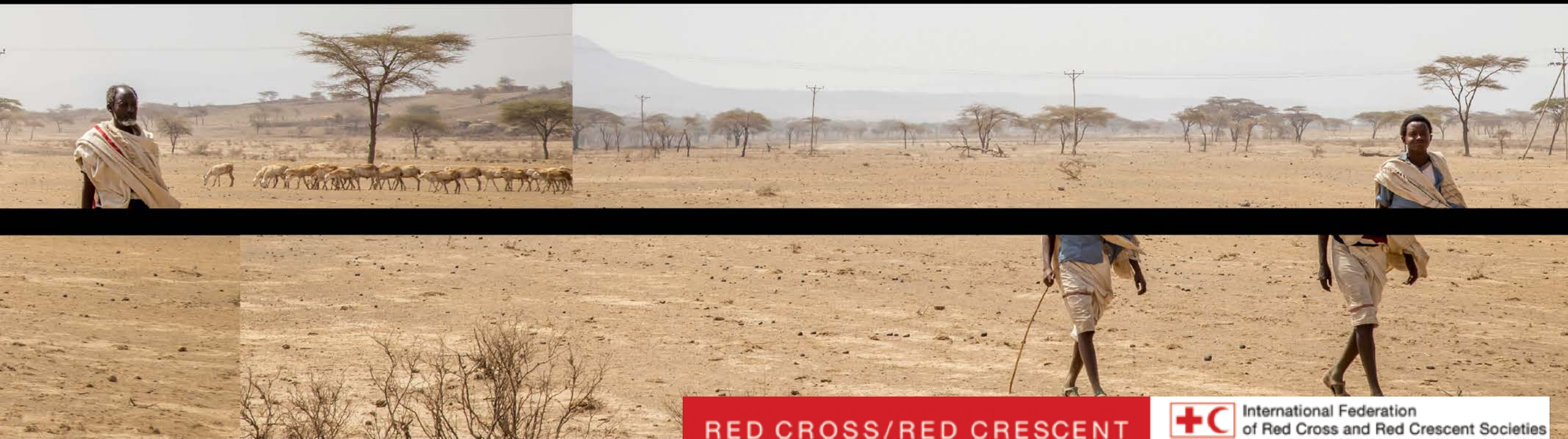


THE ROLE OF SOCIAL PROTECTION IN ADDRESSING SOCIAL VULNERABILITY TO CLIMATE RISK

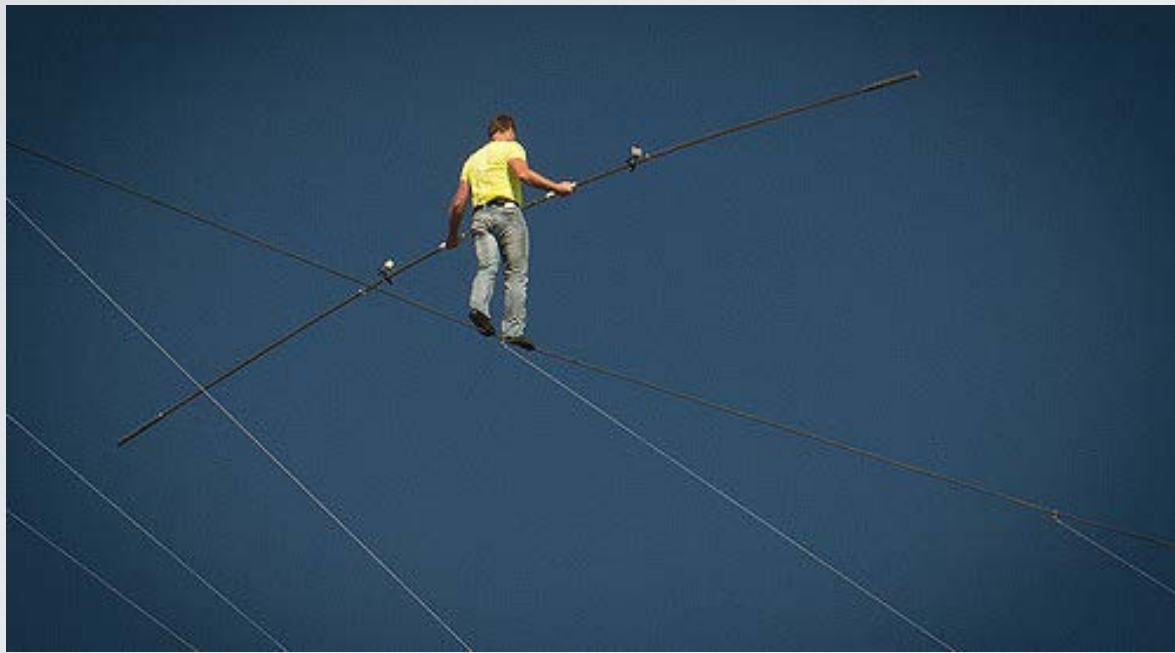
Cecilia Costella
May, 2016



RED CROSS/RED CRESCENT
CLIMATE CENTRE

 International Federation
of Red Cross and Red Crescent Societies
The Netherlands  Red Cross

SAFETY NETS



Catch People
When They Fall

Long term
Support



SAFETY NETS

The background of the slide is a composite of three rural landscape photographs. The top section shows a hazy mountain range under a grey, overcast sky. The middle section shows rolling green hills with terraced fields and small clusters of houses. The bottom section shows a lush green field with a prominent, gnarled tree in the foreground and more hills in the distance.

- India National Rural Employment Guarantee Program
- Brazil: Bolsa Familia
- Ethiopia Productive Safety Net Program

A grayscale photograph of a person wearing a headscarf and a long robe, walking through a dusty, arid landscape. The person is carrying a large metal pot hanging from a stick. The background is hazy and shows some wooden poles and debris on the ground.

WHY IS SOCIAL PROTECTION
RELEVANT TO DISASTER AND
CLIMATE- RELATED VULNERABILITY?

Addressing Vulnerability Before Disasters



Protecting the Vulnerable After Disasters





Targeting & Protection Challenges

Response Time

Data

Funding

REACHING THE MOST VULNERABLE BEFORE DISASTER HAPPENS



Forecast-based Financing (FbF)
for pre-planned preparedness actions



THANK YOU!