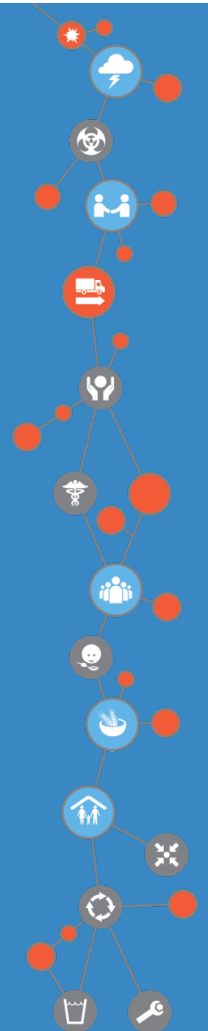


Summary of data assessments and counter-measures Hazards - land use maps, rainfall

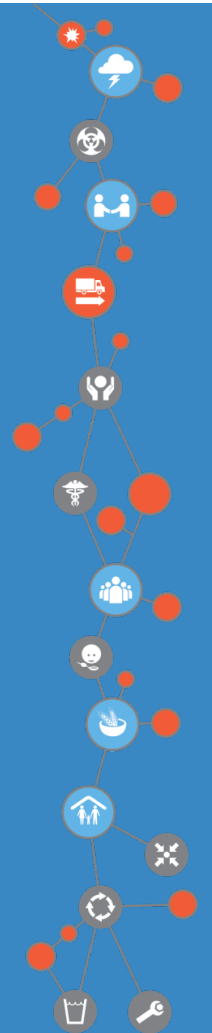
1. Danger of mixing datasets with other to produce biased assessments.
 - Counter-measure: open the datasets so that analysis can be replicated/done by more than one organization.
2. The assessment in itself is already a counter-measure: knowing what data you have, its limitations and its quality means you can treat the data accordingly.



Summary of data assessments and counter-measures

Exposure data – census and infrastructure

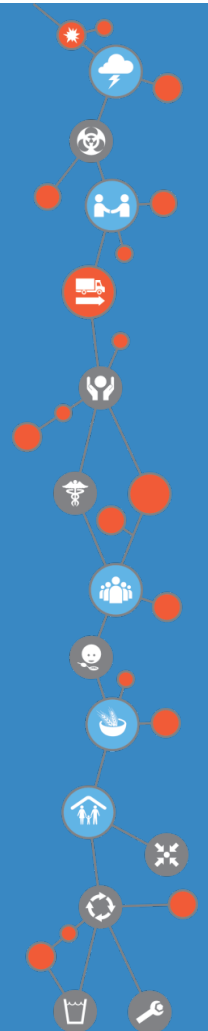
1. Identification of groups is not necessarily a bad thing if the data is protected and used for a tailored response/communication.
2. Handling data itself can be a risk.
 - Counter-measure: train people, add layers of security.
3. Identifying groups/communities can lead to discrimination, but it can also lead to adequate messaging/advocacy.
 - Counter-measure: think about whether full dataset needs to be made public.



Summary of data assessments and counter-measures

Exposure data – census and infrastructure

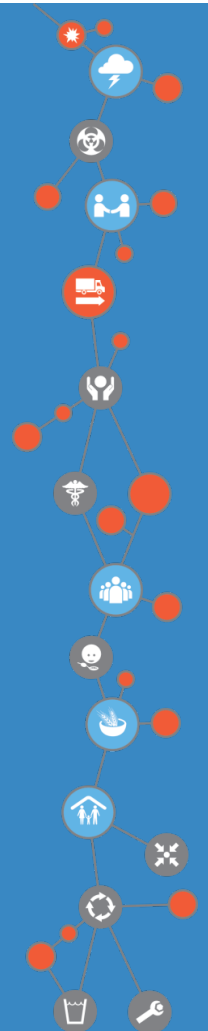
1. Is crowd sourced data reliable? It can be a great way to increase engagement but it carries a risk of incorrect information.
 - Counter-measure: incorporate other sources to corroborate the information and avoid information gaps may be targeted e.g. blank spots on maps.



Summary of data assessments and counter-measures

Final product

1. Risk: uptake of information. How do we condense the information into key messages for decision-making without compromising the quality of information?
 - Counter-measure: understand your audience and tailor the communication: make it interactive, do summary, print.
2. Risk: timeliness. If nothing happens with the information, trust may be lost. Why do a risk assessment if it takes so long?
 - Counter-measure: link to active scenarios/questions that can be answered with model.
3. Risk: data deluge! Too much information may lead to distractions and deviate from the original purpose of the analysis.



Summary of data assessments and counter-measures

Final product

1. Risk: data literacy. How to help decision-makers, affected communities, researchers understand different levels of uncertainty?
 - Counter-measure: understand your audience. Have an intermediary to help translate the findings for different audiences.

