

WHAT DOES IT MEAN TO BE VULNERABLE?















WHAT CREATES
VULNERABILITY?



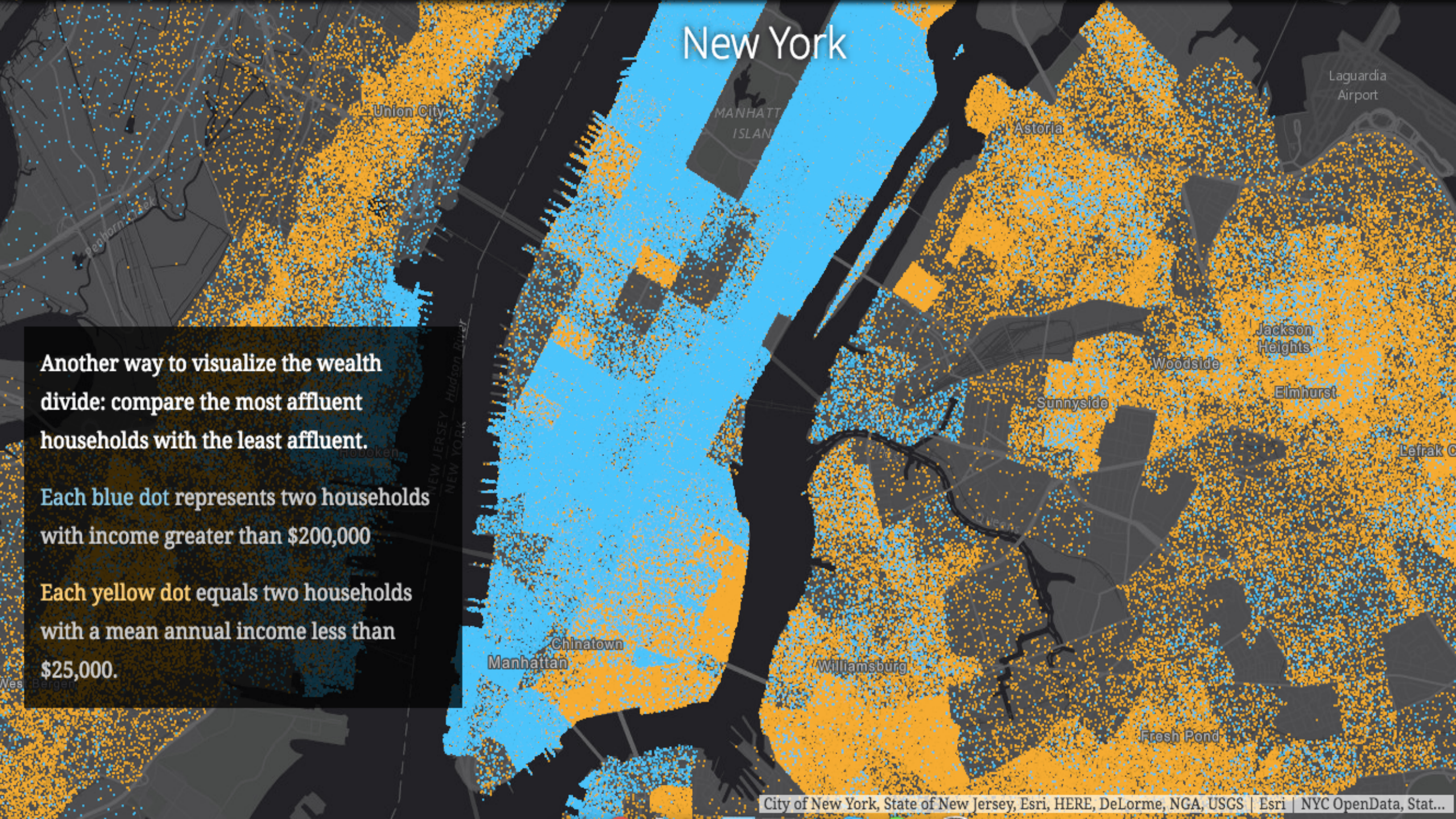


New York

Another way to visualize the wealth divide: compare the most affluent households with the least affluent.

Each blue dot represents two households with income greater than \$200,000

Each yellow dot equals two households with a mean annual income less than \$25,000.







CAN WE SEE VULNERABILITY?



Zambezia

Mopela district

Chimuara

Radarsat2 (24/01/2013)

Jainar

Landing stage

Landing stage

Road bridge

Landing stage

Road bridge

Gobuzi bridge

Caia district

Caia airport

Caia

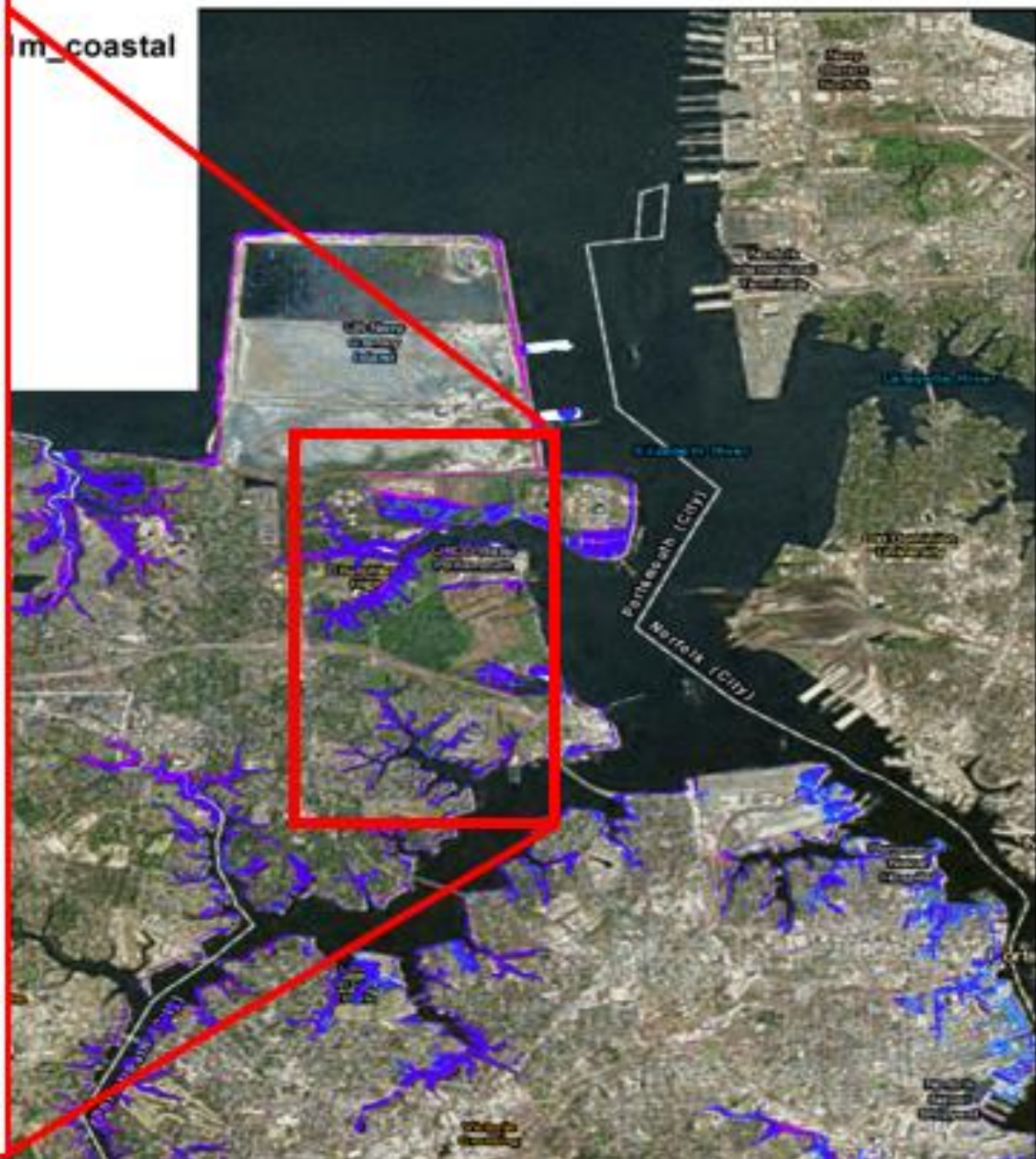
Sofala

WaterDepth1m_coastal

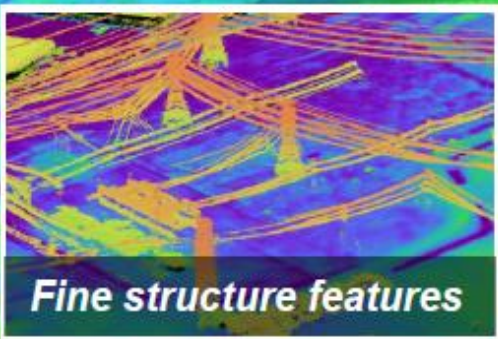
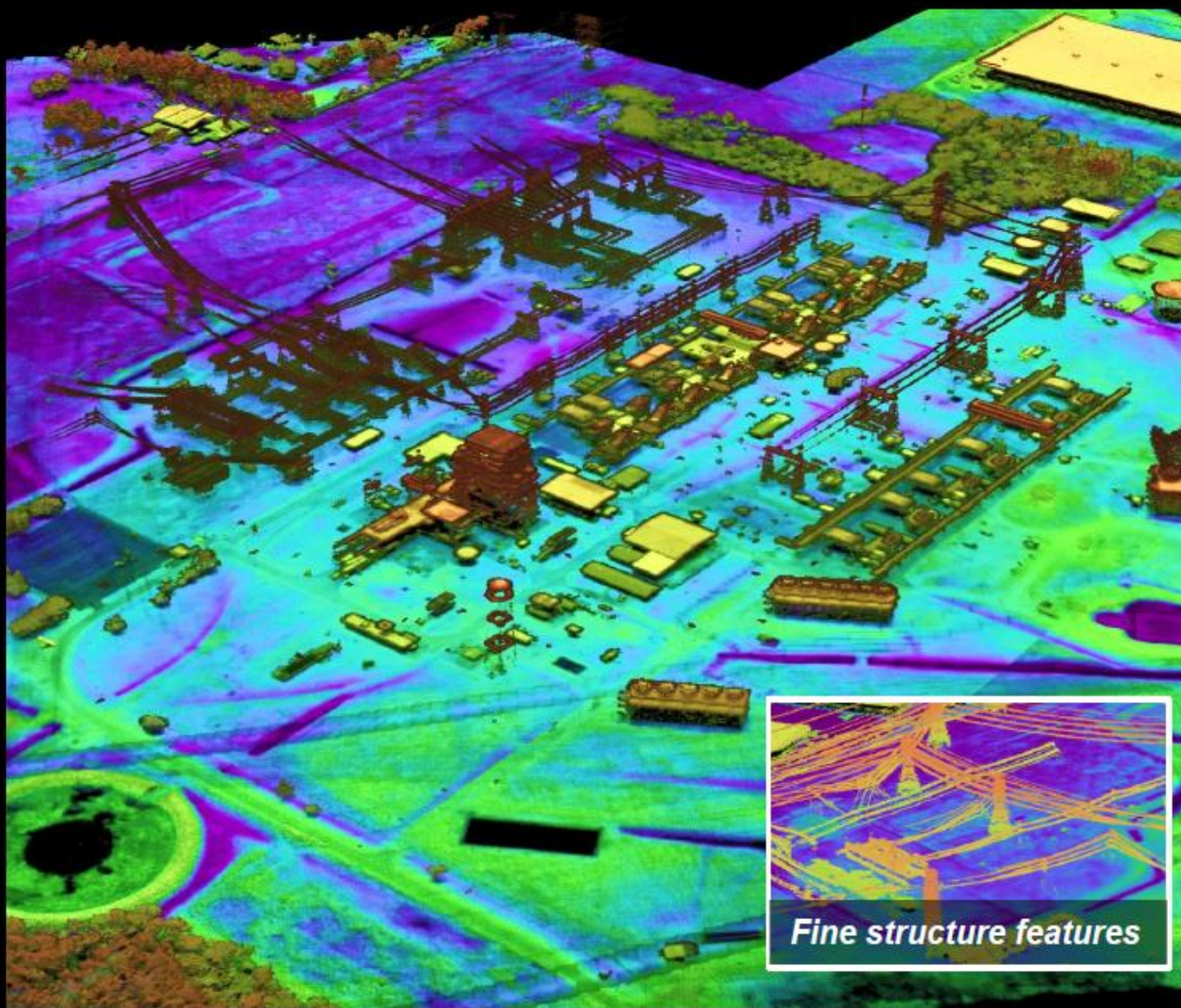
Meters



m_coastal





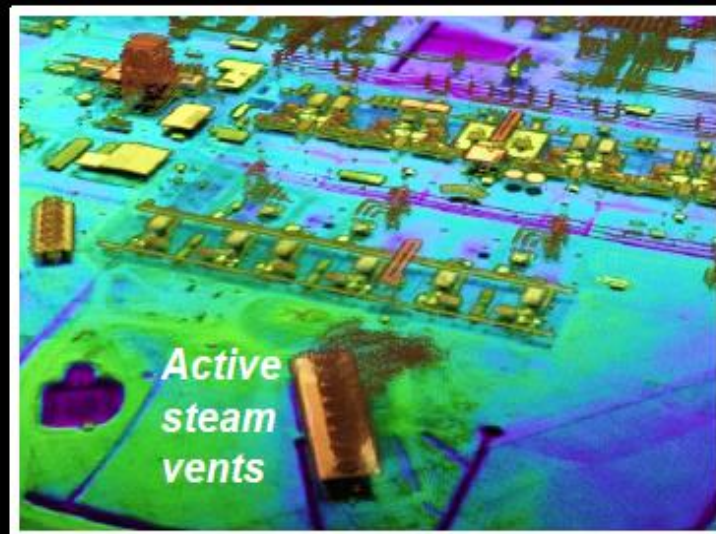


Fine structure features

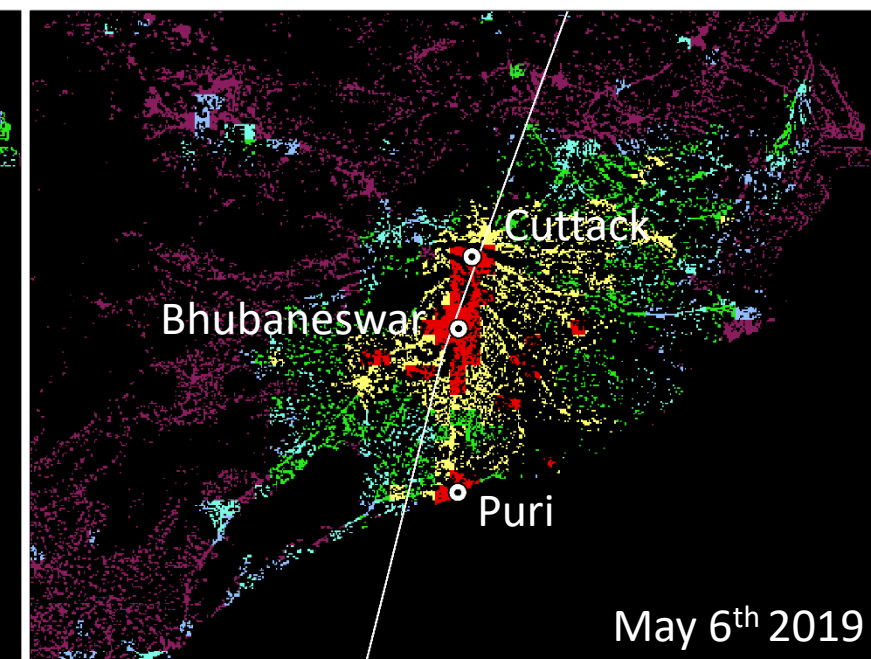
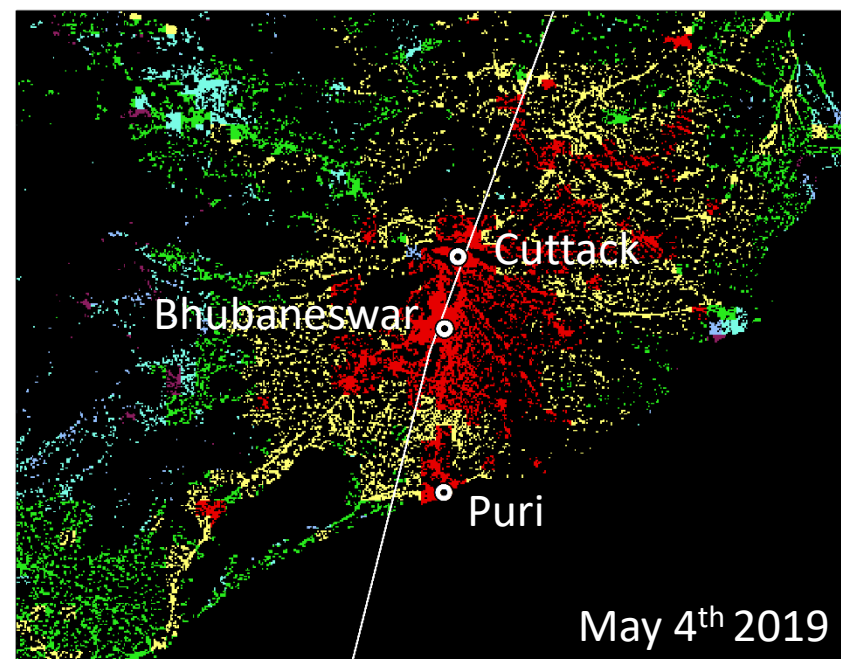
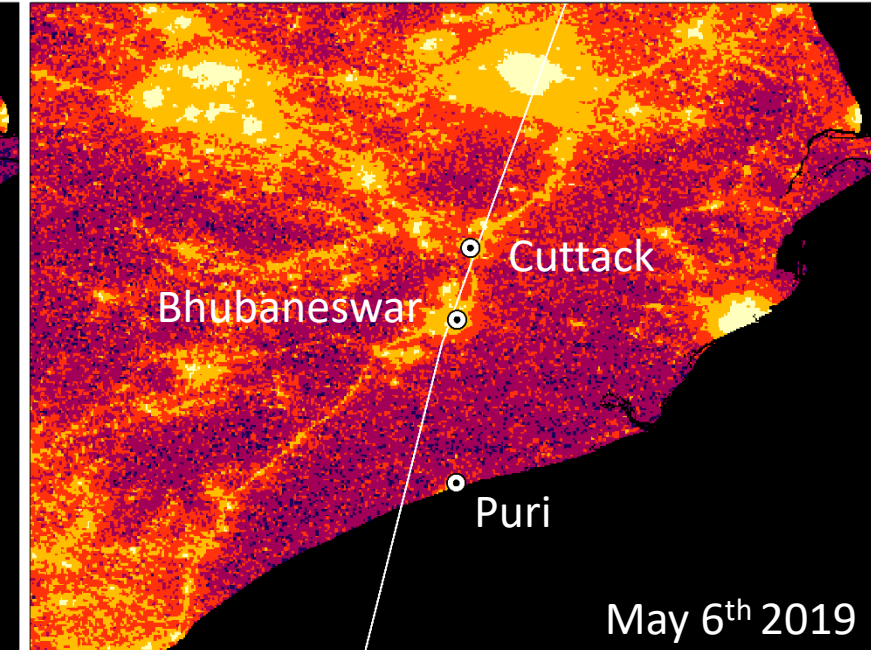
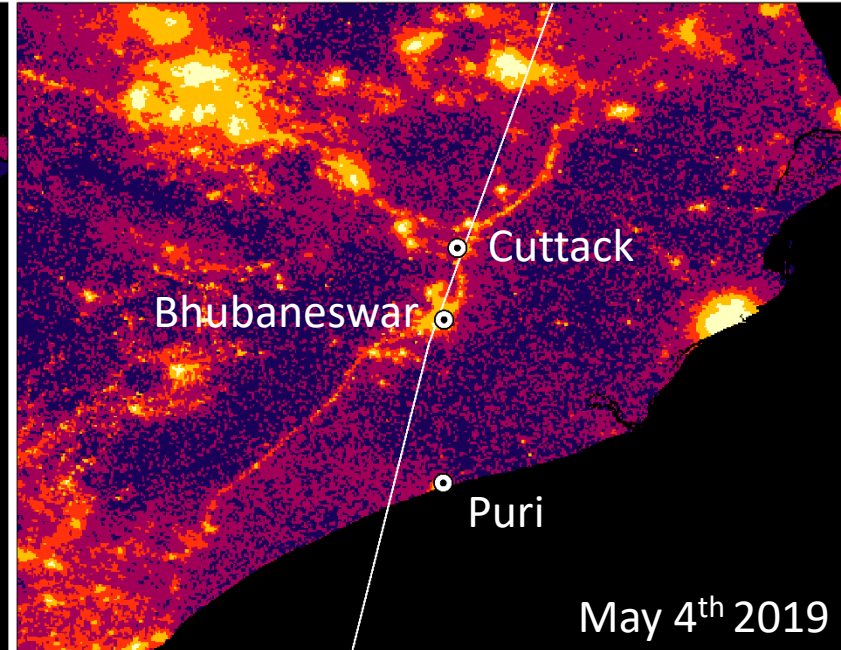
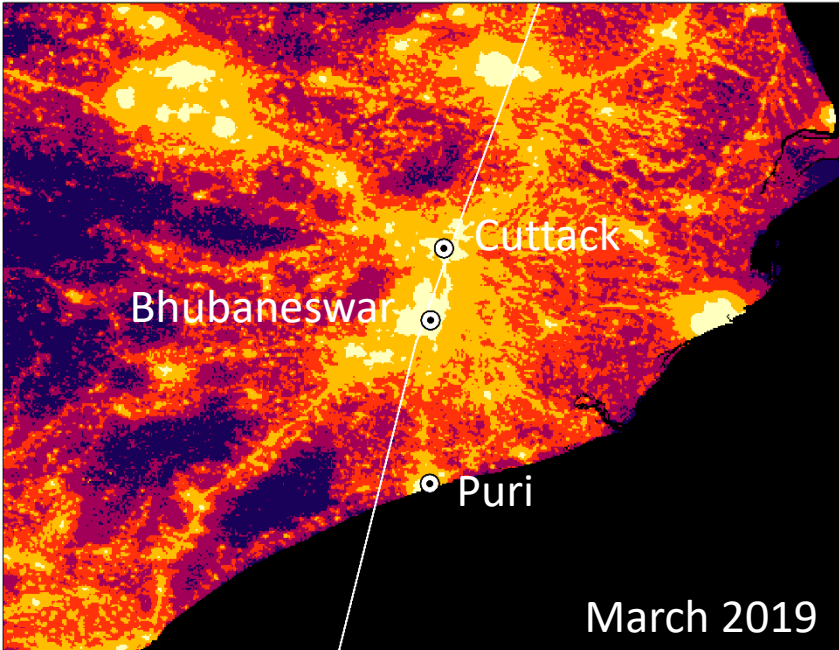
*Damage Estimation through
Overlay of Complementary Data:*



Activity Awareness:







An aerial photograph showing a significant landslide on a steep hillside. Several houses are visible, some of which appear to be in danger or have been affected by the slide. The hillside is covered in exposed earth and debris. A large, multi-story house with a grey roof is prominent on the left, while a smaller yellow house is on the right. The foreground shows lush greenery and palm trees, contrasting with the barren, eroded hillside.

DO WE KNOW HOW TO
REDUCE VULNERABILITY?

VISUALIZING VULNERABILITIES IN THE CARIBBEAN: OPPORTUNITIES FOR APPLYING EARTH OBSERVATIONS TO REDUCE RISK



Session 21
Wednesday, May 29th
2:30pm – 3:45pm
SB Training Room 3